



iscope®

A masterpiece  
in microscopy

MICROSCOPES FOR  
LIFE AND BIOMEDICAL  
SCIENCES

 euromex®



iscop



# The ideal microscope for Life and Biomedical Sciences

The microscope designers of Euromex have combined their 50 years of experience with today's modern techniques in order to manufacture this stunning masterpiece in microscopy



## FEATURES

- 1 | Binocular and trinocular models
- 2 | EWF 10x/22 mm and EWF 10x/20 mm eyepieces
- 3 | Quintuple reversed nosepiece
- 4 | Plan infinity corrected IOS objectives
- 5 | 216 mm x 150 mm rackless stage
- 6 | Height adjustable Abbe condenser N.A. 1.25
- 7 | CSS - Cable Storage System
- 8 | 3 W NeoLED™ Köhler illumination
- 9 | iCare sensor
- 10 | Precise coarse and fine control

## OPTIONAL

- Multihead system
- Face-to-face dual head system
- Ergonomical tilting head
- Ceramic coated stage
- Cardioid mirror dark field condenser with 5 W NeoLED™ illumination

# High performance optical system

Designed to be superior in accuracy and color reproduction, the highest possible resolution is reached with virtual no aberrations. The specially designed multilayer optical coatings ensure minimal light absorption and produce crisp clear images in every contrast method



## EYEPIECES

- Extended Wide Field EWF plan 10x eyepieces with 20 mm field of view and adjustable diopter on the left eyepiece for finity corrected systems (Ø 23.2 mm tube)
- Extended Wide Field HWF plan 10x eyepieces with 22 mm field of view and adjustable diopter on both eyepieces for infinity corrected IOS plan and plan phase systems and adjustable diopter on the left tube for EPLi systems (Ø 30 mm tube)

## OBJECTIVES

Using advanced production techniques and multi layer coatings the objectives of iScope® are to be valued amongst the best in their class. Experience based optical design offer world class spherical aberration correction and push resolution to the next level while keeping crisp color true images. Combining the latest CNC and assembly techniques enable perfect centration of the objectives

## NOSEPIECE

Revolving quintuple reversed nosepiece for maximum 5 objectives

## OBJECTIVES

All optics are anti-fungus treated and anti-reflection coated for max. light throughput

E-Plan EPL	4x/0.10	10x/0.25	20x/0.40 <sup>(1)</sup>	S40x/0.65	S100x/1.25 oil
E-Plan EPLi IOS	4x/0.10	10x/0.25	20x/0.40 <sup>(1)</sup>	S40x/0.65	S100x/1.25 oil
Plan PLi IOS	4x/0.10	10x/0.25	20x/0.40 <sup>(1)</sup>	S40x/0.65	S60x/0.85 <sup>(1)</sup> S100x/1.25 oil
Plan phase PLPH		10x/0.25	20x/0.40	S40x/0.65	S100x/1.25 oil
Plan phase PLPHi IOS		10x/0.25	20x/0.40	S40x/0.65	S100x/1.25 oil

(1) Optional

Advanced design, high quality glass and multilayer coatings of the iScope® ensure crisp clear images

# Modern and ergonomic design

A design that exceeds today's standard providing more comfort and convenience for microscopists, with ergonomic features like height adjustable eyepieces and minimize fatigue during long working sessions. The modern, compact size of the iScope® and the Cable Storage System allows more working space, safer operation and enables easy storage



iScope® with tilting head

## HEADS

The iScope® is standard equipped with binocular and trinocular Siedentopf type heads with an ergonomic 30° inclination for the most comfortable viewing position. A unique swiveling rotating system allows the ergonomic positioning of both tubes in a high (431 mm) and in a low position (397 mm).

The interpupillary distance is adjustable between 48 to 76 mm. This makes sure that every user can find the optimal eye position. The large  $\pm 5$  diopter adjustment(s) ensure that differences between the operators eyes can always be corrected

The trinocular head comes with a  $\varnothing 23.2$  mm photo port, ensuring maximum flexibility and acceptance of all major camera brands. The prisms inside the heads are designed to minimize the light absorption for perfect digital imaging

The iScope® comes with double fine and coarse focus control. Anti-slip coated, and low-positioned adjustment knobs provide maximum user comfort during long microscopy sessions. The friction of the focus controls can be adjusted to the user preference. An adjustable rack stop prevents damage to sample and objectives

## ERGONOMICAL TILTING HEAD

*(only available for infinity corrected models)*

The viewing angle of the iScope® optional ergonomic tilting head can be adjusted between 5 and 35°. This head is ideal for working environments where many operators share their microscope for long working sessions. Interpupillary distance 48-75 mm, optional photo attachment with standard  $\varnothing 23.2$  mm tube (only infinity corrected models)

*(To order an iScope with tilting head use reference IS.1158-xxx. For example to order an IS.1152-PLi model with ergonomic tilting head order IS.1158=PLi)*

# iScope® versatile in education

The iScope® can be equipped with a unique multi-head system.  
Teach about or discuss while viewing the same specimen with 2, 3 or 5 users at the simultaneously.  
A laser pointer with two selectable colors allows indicating the area of interest to all viewers



iScope® multihead system

## MULTIHEAD SYSTEM

(Ideal for education)

The iScope® can be extended with a unique multihead system for in total 2, 3 or 5 heads allowing simultaneous observation of specimens.

The central attachment is equipped with a joystick to move a green and red laser pointer across the entire field of views of all heads. Configurations with one, two or four additional viewing binocular heads, 30° inclined tubes and plan 4x, 10x, S40, S100x oil immersion infinity corrected IOS objectives. The trinocular head is supplied with extended wide field EWF 10x/22 mm eyepieces. Each extra binocular head is supplied with extended wide field plan EWF 10x/22 mm eyepieces

Order references: IS.1156-PLi-n, n = total number of heads

## FACE-TO-FACE DUAL HEAD SYSTEM

(Ideal for education)

The iScope models can now also be equipped with a face-to-face trinocular head for 2 users allowing simultaneous observation.

Supplied with 30° inclined tubes and Plan or E-plan 4x, 10x, S40, S100x oil immersion infinity corrected IOS objectives. The central attachment is equipped with a joystick to move a green and red laser pointer across the entire field of views of the 2 heads.

The trinocular head is supplied with extended wide field EWF 10x/22 mm eyepieces. The second binocular head is supplied with extended wide field EWF 10x/22 mm eyepieces

Order reference: IS.1154-PLi



iScope® face-to-face dual head system



The unique iScope® multihead systems are equipped with a laser pointer to indicate the area of interest to all viewers

# Mechanical stages for all applications

Beside a standard mechanical stage, the iScope® offers also a rackless mechanical stage without sharp edges protruding from the sides of the microscope for improved safety or even a ceramic coated stage for harsh environments and scratch resistant



## STAGES

The iScope® can be equipped a standard mechanical stage, an optional ceramic coated stage for harsh environments or even a rackless stage for fast positioning of sample

- 140 x 160 mm stage equipped with integrated 79 x 52 mm X-Y mechanical stage
- 216 x 150 mm rackless stage equipped with double slide holder and integrated 79 x 52 mm X-Y mechanical stage. The iScope® rackless stage has no protruding parts, enables more smooth movements and is safer
- 220 x 157 mm ceramic stage with integrated 75 x 50 mm X-Y mechanical stage protects with a very tough ceramic surface against marks and scratches. The surface also ensures stray light not to be reflected from the stage into the objective

The iScope® can be supplied with a heating stage which can be set up to 50° Celsius by a PID temperature controller. Only available with new purchased microscopes. Higher temperatures can be achieved on special request



Normal stage



Rackless stage

*The large size mechanical stages with double slide holder make routine work easier. The iScope® rackless stage has no protruding parts, enables convenient and smooth positioning, and guarantees longer durability*



# Contrast methods for a large range of applications

Besides the brightfield contrast method, configurations for phase contrast, cardioid mirror dark field, basic polarization and several epi-illumination sources for fluorescence applications can be used



*The unique iCare sensor automatically switches off the illumination of the microscope shortly after microscopists step away from their position to avoid unnecessary loss of energy*

## FOCUSING

Coaxial coarse and fine adjustments, 200 graduations, 1  $\mu\text{m}$  per graduation, 200  $\mu\text{m}$  per rotation, total travel approximately 24 mm. Supplied with an adjustable rack stop to prevent damage to sample and objectives. The coarse adjustments are equipped with friction control

## CONDENSER FOR BRIGHTFIELD

The standard height adjustable Abbe N.A. 1.25 condenser for brightfield comes with magnification indications and even accepts sliders with phase annuli. This makes it versatile and suitable for plan phase 10x/20x or S40x/S100x oil immersion IOS objectives for economical phase contrast. A slider with a simple dark stop for dark field up to 400x magnification is also available

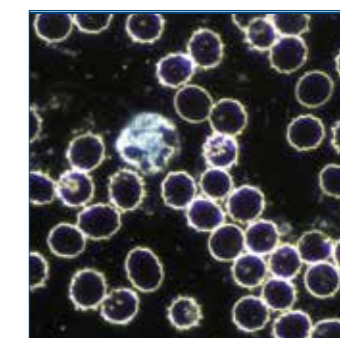
## ZERNIKE PHASE CONTRAST

An optional height adjustable Zernike NA. 1.25 phase contrast disc condenser with plan phase 10/20/S40x and S100x oil immersion objectives and dark field stop position for dark field contrast up to 400x magnification. Centering telescope is included

## CONDENSER FOR DARK FIELD

A state-of-the-art condenser equipped with reflective cardioid mirrors, a high powered 5 W LED and a S100x objective with built-in iris diaphragm enable a real 1000x magnification dark field solution. A cardioid dark field condenser with integrated power supply is only available on certain models

By adding the IS.9150 (darkfield cardioid mirror condenser with external 100-240 V power supply) and the 86.521 (S100x objective with built-in iris diaphragm) or the IS.7200-I (super contrast S100x infinity corrected IOS objective), an existing iScope brightfield microscope can be upgraded to dark field as well



*Dark field image of live blood cells*



# Intelligent features for enhanced performance

The iScope® is equipped with numerous intelligent functions and designed for improved performance. New features that ensure that the ensure iScope® is ready for any future requirements



Check out the product video on YouTube

## KÖHLER ILLUMINATION

The Köhler illumination on models with IOS plan and plan phase infinity corrected system provides high contrast and a maximum achievable resolving power of the optics. Generating even illumination of the sample and eliminates all interference from dust on lenses and side glare of the light source.

All infinity models of iScope are standard equipped with a Köhler illumination. Available for other models as option

## NEOLED

3 W adjustable Köhler NeoLED™ diasopic illumination is powered by an internal 100-240 V power supply making it suitable for world wide use. The innovative NeoLED™ design offer larger apertures, allowing the optical system of the iScope microscope to produce images at higher resolutions, very close to the theoretical diffraction limit of the optics. Other benefits of the NeoLED™ is the low energy consumption, no heating and a long operating lifetime

## ICARE SENSOR

The unique iCare Sensor is developed to avoid unnecessary loss of energy. The illumination of the microscope automatically switches off shortly after microscopists step away from their position

## CSS – CABLE STORAGE SYSTEM

iScope® allows users to easily insert the power cable into the backside of the instrument, prevents excess cable length for a safer working environment. Roll up the cable completely for easy storage

## CARRYING GRIP

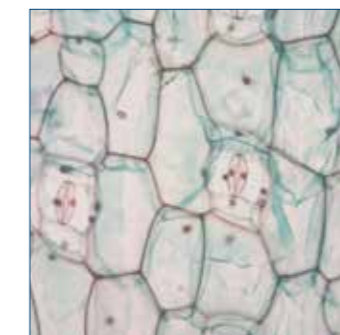
The integrated carrying grip at the back of the microscope ensures safe transportation of the microscope

## PACKAGING

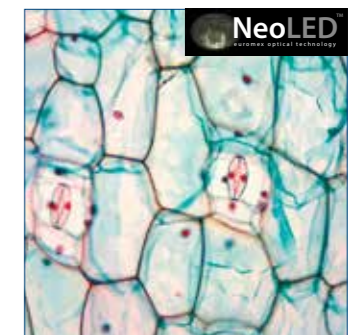
Smart Styrofoam packaging ensures a low environmental footprint while maintaining maximum safety during transport. Supplied with power cord, dust cover, tools, a spare fuse, white and green filter (depending on model), user manual and 5 ml immersion oil

## YOUTUBE

Check out the product video on YouTube and learn more about this microscope YouTube channel: [Euromex Optics Group B.V.](#)



Normal LED



NeoLED™



# Technical specifications

## FINITY MODELS

	Binocular	Trinocular	Phase contrast	EWF 10x/20 mm eyepieces	E-plan EPL 4/10/S40/S100x oil objectives	Plan phase PLPH 10x/20x/ S40x/ S100x objectives	Diopter adjustable (on left side)	Mechanical stage	i-Care Sensor
IS.1152-EPL	•			•	•		•	•	•
IS.1153-EPL		•		•	•		•	•	•
IS.1152-PLPH	•		•	•		•	•	•	•
IS.1153-PLPH		•	•	•		•	•	•	•

## INFINITY MODELS

• With ergonomic tilting head

	Binocular	Photo attachment	Phase contrast	EWF 10x/20 mm eyepieces	EWF 10x/22 mm eyepieces	Diopter adjustable (on left side)	E-plan IOS objective	Plan IOS objectives	Plan phase IOS objectives	Mechanical rackless stage	i-Care Sensor	Köhler LED
IS.1158-EPLi	•			•	•	•	•	•		•	•	
IS.1159-EPLi	•	•		•	•	•	•	•		•	•	
IS.1158-PLi	•			•	•	•	•	•		•	•	•
IS.1159-PLi	•	•		•	•	•	•	•		•	•	•
IS.1158-PLPHi	•		•	•	•	•	•	•	•	•	•	•
IS.1159-PLPHi	•	•	•	•	•	•	•	•	•	•	•	•

## INFINITY MODELS

	Binocular	Trinocular	Phase contrast	EWF 10x/22 mm eyepieces	E-plan IOS objective	Plan IOS objectives	Plan phase IOS objectives	Diopter adjustable (both sides)	Mechanical rackless stage	iCare Sensor	Köhler LED
IS.1152-EPLi	•			•	•	•	•	•	•	•	•
IS.1153-EPLi		•		•	•	•	•	•	•	•	•
IS.1152-PLi	•			•	•	•	•	•	•	•	•
IS.1153-PLi		•		•	•	•	•	•	•	•	•
IS.1152-PLPHi	•		•	•	•	•	•	•	•	•	•
IS.1153-PLPHi		•	•	•	•	•	•	•	•	•	•

## MULTIHEAD SYSTEMS

	Total users	Binocular	Trinocular	EWF 10x/22 mm eyepieces	Plan IOS objectives	Mechanical rackless stage	Diopter adjustable (on left side)	iCare sensor	Köhler LED
IS.1156-PLi2	2	1x	•	•	•	•	•	•	•
IS.1156-PLi3	3	2x	•	•	•	•	•	•	•
IS.1156-PLi5	5	4x	•	•	•	•	•	•	•
IS.1156-PLi9	9	8x	•	•	•	•	•	•	•

## FACE-TO-FACE DUAL HEAD SYSTEMS

	Total users	Binocular EWF 10x/20 mm	Trinocular EWF 10x/22 mm	Plan IOS objectives	E-plan IOS objectives	Mechanical rackless stage	Diopter adjustable (on left side)	iCare sensor	Köhler LED
IS.1154-PLi	2	1x	•	•	•	•	•	•	•
IS.1154-EPLi	2	1x	•	•	•	•	•	•	•

## DARKFIELD CONTRAST APPLICATIONS\*

	Trinocular	Darkfield	EWF 10x/20 mm eyepieces	EWF 10x/22 mm eyepieces	E-plan objective	Plan IOS objectives	Diopter adjustable (on left side)	Diopter adjustable (on both sides)	Mechanical rackless stage	iCare sensor	Köhler LED
IS.1153-PLi-DF	•	•	•	•	•	•	•	•	•	•	•
IS.1153-PLi-DFi	•	•	•	•	•	•	•	•	•	•	•
IS.1153-EPL-DF	•	•	•	•	•	•	•	•	•	•	•

\* With cardioid oil-immersion condenser with 5 W LED. The 100x objective with built-in iris diaphragm replaces the standard 100x objective

# Accessories and spare parts

## ACCESSORIES AND SPARE PARTS

### FINITY MODELS

<b>IS.6010</b>	EWF 10x/20 mm eyepiece, Ø 23.2 mm tube
<b>IS.6010-C</b>	EWF 10x/20 mm eyepiece, Ø 23.2 mm tube, with crosshair
<b>IS.6010-P</b>	EWF 10x/20 mm eyepiece, Ø 23.2 mm tube, with pointer
<b>IS.6010-CM</b>	EWF 10x/20 mm eyepiece, Ø 23.2 mm tube with 10/100 micrometer and cross hair
<b>IS.6015</b>	EWF 15x/16 mm, Ø 23.2 mm tube
<b>IS.6020</b>	EWF 20x/12 mm, Ø 23.2 mm tube
<b>IS.6099</b>	Pair of eyecups for eyepieces of finity models
<b>IS.7104</b>	E-plan EPL 4x/0.10 achromatic objective. Working distance 15.2 mm
<b>IS.7110</b>	E-plan EPL 10x/0.25 achromatic objective. Working distance 5.5 mm
<b>IS.7120</b>	E-plan EPL 20x/0.40 achromatic objective. Working distance 3.5 mm
<b>IS.7140</b>	E-plan EPL S40x/0.65 achromatic objective. Working distance 0.45 mm
<b>IS.7160</b>	E-plan EPL S60x/0.85 achromatic objective. Working distance 0.19 mm
<b>IS.7100</b>	E-plan EPL S100x /1.25 oil immersion achromatic objective. Working distance 0.13 mm
<b>IS.7710</b>	Plan PLPH 10x/0.25 achromatic phase contrast objective. Working distance 12.2 mm
<b>IS.7720</b>	Plan PLPH 20x/0.40 achromatic phase contrast objective. Working distance 5.0 mm
<b>IS.7740</b>	Plan PLPH S40x/0.65 achromatic phase contrast objective. Working distance 0.37 mm
<b>IS.7700</b>	Plan PLPH S100x /1.25 oil immersion achromatic phase contrast objective. Working distance 0.13 mm
<b>86.521</b>	Plan PL S100x/1.25 oil immersion objective with iris diaphragm. Working distance 0.33 mm

### INFINITY MODELS

<b>IS.5700</b>	Ergonomic tilting head IOS series
<b>IS.9800</b>	Photo tube for IS.5700 (Ø 23.2 mm tube)
<b>IS.6011</b>	EWF 10x/22 mm eyepiece
<b>IS.6210</b>	EWF 10x/22 mm eyepiece (Ø 30 mm tube)
<b>IS.6210-P</b>	EWF 10x/22 mm eyepiece with pointer
<b>IS.6210-CM</b>	EWF 10x/22 mm eyepiece with 10/100 micrometer and cross hair (Ø 30 mm tube)
<b>IS.6215</b>	EWF 15x/16 mm (Ø 30 mm tube)
<b>IS.6220</b>	EWF 20x/12 mm (Ø 30 mm tube)
<b>IS.6299</b>	Pair of eyecups (Ø 30 mm tube) for infinity models
<b>IS.7202</b>	Plan PLi 2x/0.06 IOS infinity corrected achromatic objective. Working distance 20.2 mm
<b>IS.7204</b>	Plan PLi 4x/0.10 IOS infinity corrected achromatic objective. Working distance 15.4 mm
<b>IS.7210</b>	Plan PLi 10x/0.25 IOS infinity corrected achromatic objective. Working distance 10 mm
<b>IS.7220</b>	Plan PLi 20x/0.40 IOS infinity corrected achromatic objective. Working distance 5.1 mm
<b>IS.7240</b>	Plan PLi S40x/0.65 IOS infinity corrected achromatic objective. Working distance 10.54 mm
<b>IS.7260</b>	Plan PLi S60x/0.85 IOS infinity corrected achromatic objective. Working distance 0.14 mm
<b>IS.7200</b>	Plan PLi S100x/1.25 IOS infinity corrected achromatic objective. Working distance 0.13 mm
<b>IS.7200-I</b>	Plan PLi S100x/1.25 IOS infinity corrected achromatic objective. with iris diaphragm. Working distance - - - mm

<b>IS.7404</b>	Plan Fluarex PLFi 4x/0.13 IOS infinity corrected achromatic objective. Working distance 16.3 mm
<b>IS.7410</b>	Plan Fluarex PLFi 10x/0.30 IOS infinity corrected achromatic objective. Working distance 12.4 mm
<b>IS.7420</b>	Plan Fluarex PLFi 20x/0.50 IOS infinity corrected achromatic objective. Working distance 1.5 mm
<b>IS.7440</b>	Plan Fluarex PLFi S40x/0.75 IOS infinity corrected achromatic objective. Working distance 0.35 mm
<b>IS.7400</b>	Plan Fluarex PLFi S100x/1.30 IOS infinity corrected achromatic objective. Working distance 0.13 mm
<b>IS.8804</b>	E-plan EPLi 4x/0.10 IOS infinity corrected achromatic objective. Working distance 15.4 mm
<b>IS.8810</b>	E-plan EPLi 10x/0.25 IOS infinity corrected achromatic objective. Working distance 5.8 mm
<b>IS.8820</b>	E-plan EPLi 20x/0.40 IOS infinity corrected achromatic objective. Working distance 15.4 mm
<b>IS.8840</b>	E-plan EPLi S40x/0.65 IOS infinity corrected achromatic objective. Working distance 0.43 mm
<b>IS.8800</b>	E-plan EPLi S100x/1.25 IOS infinity corrected achromatic objective. Working distance 0.13 mm
<b>IS.8910</b>	Plan PLPHi 10x/0.25 achromatic phase contrast IOS infinity corrected objective. Working distance 10.2 mm
<b>IS.8920</b>	Plan PLPHi 20x/0.40 achromatic phase contrast IOS infinity corrected objective. Working distance 5.1 mm
<b>IS.8940</b>	Plan PLPHi S40x/0.65 achromatic phase contrast IOS infinity corrected objective. Working distance 0.5 mm
<b>IS.8900</b>	Plan PLPHi S100x/1.25 achromatic phase contrast IOS infinity corrected objective. Working distance 0.13 mm

### FINITY AND INFINITY MODELS

<b>IS.9102</b>	Standard Abbe condenser 1.25 NA with slot for darkfield and phase contrast sliders
<b>IS.9105</b>	Swing-out 0.9/1.25 NA condenser
<b>IS.9124</b>	Zernike phase contrast set with PLPH 10/20/40/100x objectives and rotating phase contrast condenser with bright and dark field position. With green opaque filter
<b>IS.9149</b>	Telescope for alignment of for phase contrast annuli (Ø 23.2 mm tube)
<b>IS.9150</b>	Cardioid dark field condenser with integrated 5 W LED light source and external 100-240 V mains adapter
<b>IS.9160</b>	Phase contrast slider set with PLPH 10/40x objectives and slider (with green opaque filter)
<b>IS.9161</b>	Phase contrast slider set with PLPH 20/100x objectives and slider (with green opaque filter)
<b>IS.9162</b>	Phase contrast slider set with 10x and S40x PLPHi IOS infinity corrected objectives and annuli for 10x/S40x
<b>IS.9170</b>	Slider with darkfield stop
<b>AE.5168-I</b>	Heating stage for iScope series with controller, Only with new purchased microscopes
<b>IS.9503</b>	Large ceramic stage 220 x 157 mm. Only with new purchased microscopes (add /C suffix after iScope® model part number)
<b>IS.9600</b>	Polarization filter for lamp house (45 mm)
<b>IS.9601</b>	Simple polarization set. Hand rotating polarizer for lamp house and fix polarizer mounted under head, see picture of analyzer
<b>IS.9700</b>	Blue opaque filter for lamp house (45 mm)
<b>IS.9702</b>	Green opaque filter for lamp house (45 mm)
<b>IS.9704</b>	Yellow opaque filter for lamp house (45 mm)
<b>IS.9710</b>	White opaque filter for lamp house (45 mm)
<b>IS.9880</b>	Köhler LED attachment

# iScope® versatile in fluorescence

For biological and medical applications fluorescence microscopes are used to observe certain parts of living cells and tissues with help of fluorophores. One or more fluorophores are added to the parts of the specimen to be observed. When the fluorophores are exposed to so-called excitation light, the excitation energy is absorbed by the fluorophore that start emitting so-called emission light that can be observed by the microscope. One can distinguish tumor cells from other cells, follow biological processes or prove the presence or absence of antibodies, etc



IS.3152-PLi/3

IS.3153-PLi/6

The excellent optics and mechanical components make the iScope a state-of-the-art microscope that is suitable for fluorescence applications in Life Science and Biotechnical fields. The iScope fluorescence microscope can be supplied with:

- 6-position rotating attachment with 100 W mercury vapor light source
- 3-position slider attachment with 100 W mercury vapor light source
- 1-position slider attachment with a 3 W NeoLED 465-475 nm blue light source
- 1-position slider attachment with a 3 W NeoLED 520-530 nm green light source

## ILLUMINATION FOR FLUORESCENCE

The 6-positions rotating or 3-positions slider fluorescence attachments are supplied with standard 100 W HBO mercury vapor light source for broad powerful light spectrum and 100-240 V external power supply with indication of the life time of 100 W HBO lamp. Supplied with standard fluorescence filters sets for blue and green excitation and a UV protection shield

The iScope® fluorescence microscopes equipped with a 100 W mercury vapor light source can be supplied with more specific, optimized and application related fluorescence filters sets. Two single position fluorescence attachments are supplied with 460-495 nm 3 W LED for blue excitation or 510-550 nm 3 W LED light source for green excitation and 100-240 Vac/7.5 Vdc external power supply. Supplied with standard fluorescence filters sets for blue and green excitation



3-Position fluorescence slider attachment



6-Position fluorescence rotating attachment



# Technical specifications

## 6-POSITIONS FLUORESCENCE ROTATING ATTACHMENT

• With 100 W mercury vapor light source

The 6-positions rotating fluorescence attachments are supplied with a standard 100 W HBO mercury vapor light source for broad powerful light spectrum. Supplied with standard fluorescence filters sets for excitation in the blue and green light spectrum and a UV protection shield

	Binocular	Trinocular	WF 10x/22 mm eyepieces	Diopter adjustable (on left side)	Diopter adjustable (both sides)	E-plan IOS objectives	Plan IOS objectives	Plan PLF objectives	100 W HBO light source	Filter sets (blue&green)	NeoLED
IS.3152-EPLi/6	•		•	•		•			•	•	•
IS.3153-EPLi/6		•	•	•		•			•	•	•
IS.3152-PLi/6	•		•		•		•		•	•	•
IS.3153-PLi/6		•	•		•		•		•	•	•
IS.3152-PLFi/6	•		•		•			•	•	•	•
IS.3153-PLFi/6		•	•		•			•	•	•	•

## 3-POSITIONS FLUORESCENCE SLIDER ATTACHMENT

• With 100 W mercury vapor light source

The 3-positions slider fluorescence attachments are supplied with standard 100 W HBO mercury vapor light source for broad powerful light spectrum. Supplied with standard fluorescence filters sets for blue and green excitation and a UV protection shield

	Binocular	Trinocular	WF 10x/22 mm eyepieces	Diopter adjustable (on left side)	Diopter adjustable (both sides)	E-plan IOS objectives	Plan IOS objectives	Plan PLF objectives	100 W HBO light source	Filter sets (blue&green)	NeoLED
IS.3152-EPLi/3	•		•	•		•			•	•	•
IS.3153-EPLi/3		•	•	•		•			•	•	•
IS.3152-PLi/3	•		•		•		•		•	•	•
IS.3153-PLi/3		•	•		•		•		•	•	•
IS.3152-PLFi/3	•		•		•			•	•	•	•
IS.3153-PLFi/3		•	•		•			•	•	•	•

## 1-POSITION SLIDER ATTACHMENT

• With a 3 W NeoLED 465-475 nm blue light source (/LB)

• With a 3 W NeoLED 520-530 nm green light source (/LG)

Single position slider fluorescence attachments are supplied with either with a 460-495 nm 3 W LED for blue excitation or a 510-550 nm 3 W LED light source for green excitation. Supplied with standard fluorescence filters sets for blue (/LB) or green excitation (/LG)

	Binocular	Trinocular	WF 10x/22 mm eyepieces	Diopter adjustable (on left side)	Diopter adjustable (both sides)	E-plan IOS objectives	Plan IOS objectives	Plan PLF objectives	100 W HBO light source	Blue excitation 460-495nm	Green excitation 520-530nm	NeoLED
IS.3152-EPLi/LB	•		•	•		•			•	•	•	•
IS.3153-EPLi/LB		•	•	•		•			•	•	•	•
IS.3152-PLi/LB	•		•	•		•			•	•	•	•
IS.3153-PLi/LB		•	•		•		•		•	•	•	•
IS.3152-PLFi/LB	•		•		•			•	•	•	•	•
IS.3153-PLFi/LB		•	•		•			•	•	•	•	•
IS.3152-EPLi/LG	•		•	•		•			•	•	•	•
IS.3153-EPLi/LG		•	•	•		•			•	•	•	•
IS.3152-PLi/LG	•		•		•		•		•	•	•	•
IS.3153-PLi/LG		•	•		•		•		•	•	•	•
IS.3152-PLFi/LG	•		•		•			•	•	•	•	•
IS.3153-PLFi/LG		•	•		•			•	•	•	•	•

# Accessories and spare parts

## OPTIMIZED FLUORESCENCE FILTERS SETS

(Only for models with 100 W mercury vapor illuminations)

• For fluorescence filter sets for the 6-positions attachment, add /6 to the reference below

• For fluorescence filter sets for the 3-positions attachment, add /3 to the reference below

### IS.9750.39001

Filter set EX435 (BP20) DM455 (LP) EM480 (BP30) AmCyan, Atto 425, Cerulean, CFP, ECFP fluorophore. Needs empty filter block

### IS.9750.39002

Filter set EX480 (BP30) DM505(LP) EM535 (BP40) Acridine Orange + DNA, Alexa Fluor 488™, Atto 488, Azami Green, BODIPY FL/pH7.2, Calcein, Calcium Green™-1, Cy2™, DiO, DyLight 488, EGFP, Emerald GFP, FAM, FITC, Fluo-4, GFP, LysoTracker Green/pH 5.2, MitoTracker Green, FM/MeOH, mWasabi, Oregon Green™ 488, SYBR® Green I, SYTO 9/DNA, ZsGreen fluorophore. Needs empty filter block

### IS.9750.39003

Filter set EX495 (BP20) DM515 (LP) EM540 (BP30) Alexa Fluor 514™, Citrine, EYFP/pH 7, F/AsH-CCPFCC, mCitrine, Oregon Green™ 514, Rhodamine 123, Topaz. Needs empty filter block

### IS.9750.39004

Filter set EX540 (BP25) DM565 (LP) EM605 (BP55) Alexa Fluor 546™, Alexa Fluor 555™, Atto 550, CAL Fluor® Red 590, Cy3™, Dil, DsRed, DyLight 549, MitoTracker Orange/MeOH, Resorufin, Rhod-2, TagRFP, TAMRA, tdTomato, Tetramethylrhodamine isothiocyanate, TRITC. Needs empty filter block

### IS.9750.39005

Filter set EX540 (BP25) DM565 (LP) EM 620 (BP60) TRITC-red-shifted, Ethidium homidimer-1/DNA, Propidium Iodide. Needs empty filter block

### IS.9750.39007

Filter set EX620 (BP50) DM655 (LP) EM 690 (BP50) Alexa Fluor 647™, Allophycocyanin (APC), Atto 647N, Cy5™, DiD, Draq5, DayLight 649, MitoTracker Deep Red 633/MeOH, Nile Blue, Quasar® 670, SYTO® 60, TO-PRO™-3. Needs empty filter block

### IS.9750.39008

Filter set EX420 (BP40) DM455 (LP) EM 535 (BP40) Lucifer Yellow/Tetracycline/AlexaFluor 430. Needs empty filter block

### IS.9750.39009

Filter set EX480 (BP30) DM505 (LP) EM 620 (BP60) for Acridine Orange + RNA, Di-8-ANEPPS non-ratiometric, DiA, Ethidium, Bromide, FM™ 1-43, LysoTracker Yellow HCK-123, Pulsar™ 650. Needs empty filter block

## OPTIMIZED PREMIUM FLUORESCENCE FILTERS SETS

(Only for models with 100 W mercury vapor illuminations)

### IS.9750.0401

Premium filter set EX440 (BP21), DM455 (LP), EM480 (BP30) CFP, Cerulean, CyPet, SpectrumAqua. Needs empty filter block

### IS.9750.0403

Premium filter set EX380 (BP50), DM410 (LP), EM450 (BP60) BFP, BFP2, DAPI, Alexa Fluor 350, Hoechst 33342 & 33258, BFP. Needs empty filter block

### IS.9750.0404

Premium filter set EX470 (BP40), DM500 (LP), EM535 (BP50) Alexa Fluor 488, CoralHue Azami Green, Cy2, eGFP, FITC, GFP (sapphire), Emerald. Needs empty filter block

### IS.9750.0407

Premium filter set EX635 (BP30), DM660 (LP), EM710 (BP80) Cy5, Alexa Fluor 647. Also compatible with TO-PRO-3, TOTO-3, Kodak, X-Sight 650. Needs empty filter block

### IS.9750.0412

Premium filter set EX500 (BP25), DM252 (LP), EM545 (BP35) Acridine Orange (+DNA), Rhodamine Green, CL NERF, (hi pH), YFP. Also compatible with Alexa Fluor 532. Needs empty filter block

### IS.9750.0414

Premium filter set EX560 (BP55), DM505 (LP), EM645 (BP75) Texas Red, Texas Red-X, CryptoLight CF-6. Also compatible with Cy3.5, HcRed, mRaspberry, MitoTracker Red. Needs empty filter block

**IS.9749-6** Empty filter cube for 6-positions fluorescence attachment

**IS.9749-3** Empty filter cube for 3-positions fluorescence attachment

**IS.9749-1** Empty filter cube for 1-position fluorescence attachment

**IS.9753** Filter rail, 3-positions

**IS.9102** Standard Abbe condenser 1.25 NA condenser with slot for dark field and phase contrast sliders

**IS.9105** Swing-out 0.9/1.25 NA condenser

## ALL MODELS

**SL.5500** NeoLED™ replacement unit for iScope

**AE.5130** Universal Ø 23.2 mm tube adapter with built-in 2x lens for SLR photo camera with APS-C sensor. Needs T2 adapter

**AE.5025** T2 ring for Nikon D SLR digital camera

**AE.5040** T2 ring for Canon EOS SLR digital camera

**PB.5155** Microscope slides 76 x 26 mm, ground edges, 50 pieces

**PB.5165** Cover glasses 18 x 18 mm, thickness 0.13-0.17 mm, 100 pieces

**PB.5168** Cover glasses 22 x 22 mm, thickness 0.13-0.17 mm, 100 pieces

**PB.5245** Lens cleaning paper, 100 sheets per pack

**PB.5255** Immersion oil, n = 1.482 (25 ml)

**PB.5274** Isopropyl alcohol 99% (200 ml)

**PB.5275** Cleaning kit: lens cleaning fluid, lint free lens tissue, brush, air blower, cotton swabs



The Euromex Quality system is certified according to ISO 9001:2008 and supports our pursuit of continuous improvement and our on-going commitment to provide our world-wide customers

#### **HEADQUARTERS**

##### **Euromex Microscopen bv**

Papenkamp 20  
6836 BD Arnhem  
The Netherlands  
Tel: +31 (0) 26 323 22 11  
info@euromex.com

#### **SALES EXPORT OFFICE**

##### **Euromex Microscopen Spain sl**

Carretera de Barcelona 88, Entresuelo  
Edificio Technomar  
08302 Mataró, Spain  
Tel: +34 (0) 937 415 609  
info@euromex.com

**[www.euromex.com](http://www.euromex.com)**