

# CRUMA FL-1

Cruma breaks with the tradition of removable laminar flow cabinets offering the new **Cruma FL-1**, an innovative cabin whole body.

- ✓ Digital control display
- ✓ Programmable stopwatch / timer
- ✓ Larger dimensions in the front working area
- ✓ Switchable internal socket

Furthermore, the new cabin **Cruma FL-1** combines a striking and unique exterior design with the best technology and internal development. However, to meet the operator in his everyday work and protect it in their work caring for the environment.

In vertical laminar flow cabinets, the air flow passes through a HEPA H-14 filter (manufactured according to EN-1822 standard) at a constant speed, runs through the cabinet in a laminar flow and in a vertical direction, generating a sterile **ISO Class 4** area according to the UNE EN ISO 14644 standard, protecting the product, from external contamination and cross contamination between samples.

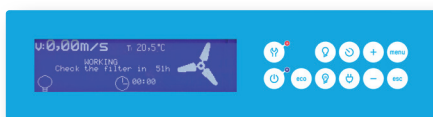


## USES

- ✓ Laboratory food industries in general
- ✓ Transfer of drugs in the pharmacy department
- ✓ Hematology and clinical analysis
- ✓ Filled with antibiotics and injectable drugs (except cytostatic) microscopic analysis
- ✓ Tissue culture bags reconstitution of parenteral methods of assisted fertilization techniques
- ✓ Micropropagation techniques. Plant cell cultures.
- ✓ Water quality control
- ✓ Manufacturing of electronic devices...

## NEW FEATURES

More information on the new LCD display



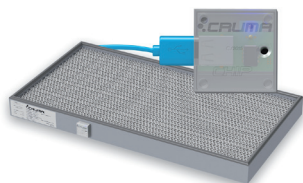
- ✓ New size 127x34mm display
- ✓ Type of filter installed, working hours, expiration date and next revision date
- ✓ Countdown timer
- ✓ Clock and calendar

New features and components

- ✓ Initial cycle flow adequacy and final purge cycle
- ✓ Fault LED
- ✓ Control of air flow through Microprocessor
- ✓ HEPA filters with electronic chip
- ✓ LED illumination

New alarms and scheduled warnings

- ✓ Next validation warning
- ✓ Few hours of filter life warning
- ✓ Countdown timer warning
- ✓ Expired filter alarm by hours
- ✓ Expired filter alarm by date
- ✓ Equipment without filter alarm



## MAIN FEATURES

- ✓ **Manufacture:** outer surfaces made of cold rolled steel gray / ocher coating, stoveenamelled, resistant to the chemical compounds used for sterilization
- ✓ **Worktop:** the surface of the working chamber is in secured safety glass
- ✓ **Absolute HEPA H-14 filter** with flow equalizer, efficiency greater than 99.995% on 0.3 micron particles.
- ✓ **Fan:** centrifugal double suction, suitable to provide laminar flow in the workspace
- ✓ **Control panel with soft-touch keyboard** and switch for LED and UV lamps; the air speed is kept at a constant rate thanks to the HEPA filter which is electronically self-regulated, electronic control air speed and control key to slow it down
- ✓ **Lighting:** LED lamp placed in the central part of the cabinet, for a better light distribution over the working surface

## TECHNICAL INFORMATION

Number of filtering columns	1
Number of IP44 fans	1
Average face velocity	0,45 m/s
Total electrical power consumption	226 W
Voltage/Frequency	110-220 V / 50-60 Hz
Illumination level LED	850 lm
UV germicidal lamp	15W
Noise level	55 dB
<b>Packaging:</b> 100% recyclable Wood box with international phytosanitary certificate	Volume 0,74 m <sup>3</sup> Weight 112 Kg

It is not a typographical error,  
**7 year warranty**

Because we are convinced of the quality of our products.



\*More information [www.cruma.es](http://www.cruma.es)

Well done, well shipped.  
**Our responsible packaging**

Wood box 100% recyclable with international phytosanitary certificate.



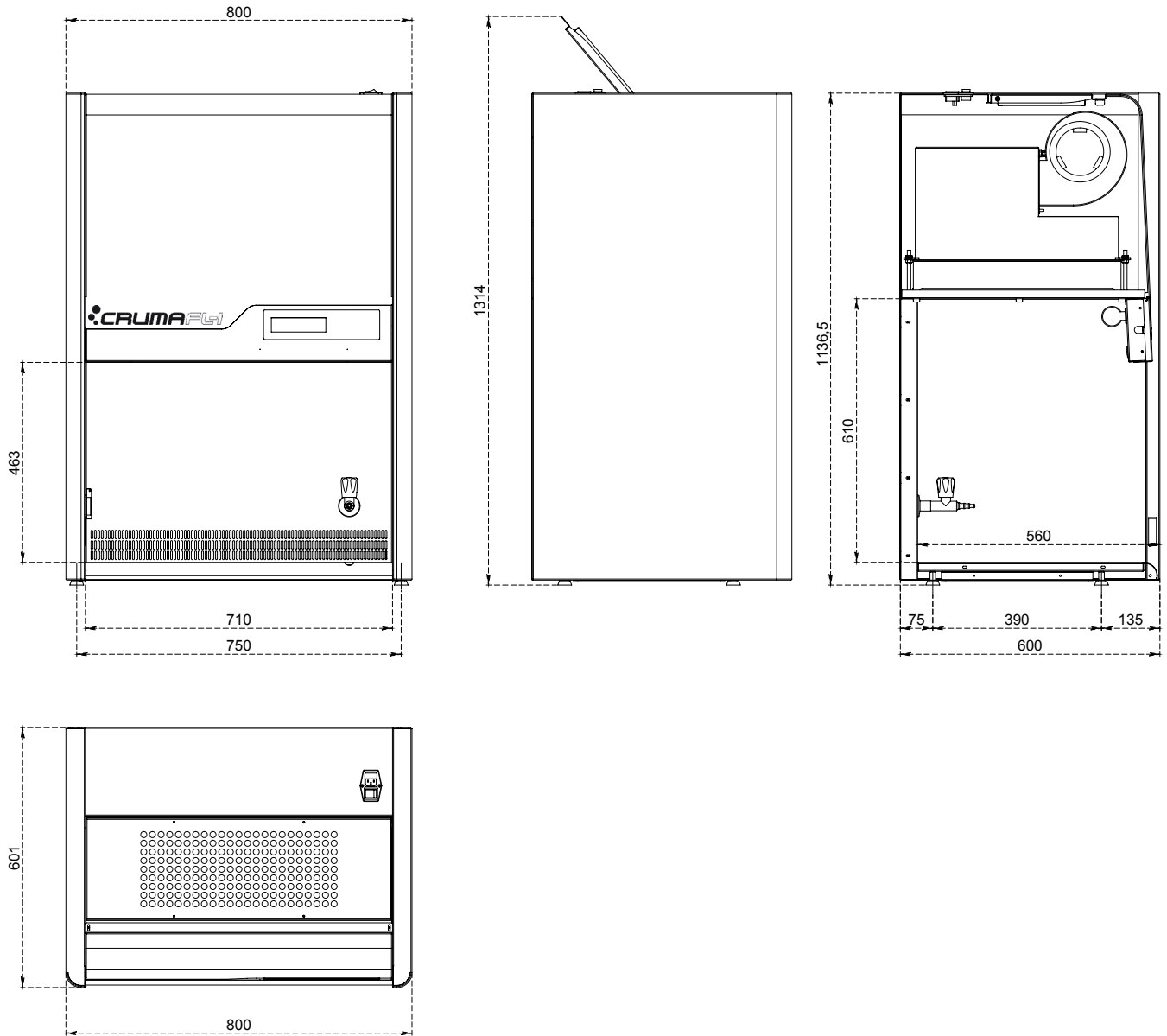
Do you need help or  
**technical assistance?**

Contact your distributor or call us if you have any questions or need technical support, spare parts, maintenance service...

+34 93 370 61 62

# CRUMAFL1

## SIZES (mm)



### SIZES (mm)

Exterior			Interior		
Width	Depth	Height	Width	Depth	Height
800	600	1136,5	710	560	610

### STRUCTURE

Metallic parts	1.2 mm galvanized steel, coated with antiacid polymer powder resin thermo-hardened at 200 °C
Front Panel	Transparent polymethylmethacrylate 6 mm thick (light transmission of 93%)

**CRUMAFL1****STANDARD EQUIPMENT**

Electronic circuit with large format LCD display	Security levels: level 1 for users and level 2 for maintenance users
Filters controlled by microprocessor	The filters are provided with a chip with USB connection identifying the type of filter installed and the expiry date
Illumination	LED high light intensity and low consumption 9W / 850lm
UV Lamp	Germicidal UV lamp 15W
Digital timer with audible warning	Hourmeter for the control and warning of the work in the cabinet
Electrical plug	Placed in the internal roof of the cabinet and conmuted with the electronic circuit
Clock and Calendar	Display of date and time
Gas tap	Placed in the internal of the cabinet
Work surface	Liquid retention tray (2-10 liters) with working surface in white tempered glass
G4 prefilter	Pre-filtering class G4 biofibre synthetic blanket
Warranty	7 years

**OPTIONAL EQUIPMENT**

Tubular stand
Stand with wheels Movilair
Double gas tap
Vacuum tap
Double vacuum tap
Double electric socket

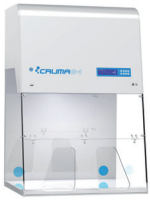
**ACCORDING TO STANDARDS**

Filters	UNE EN ISO 16890:2017 EN-1822:2010 (HEPA & ULPA Filters)
Quality	UNE EN ISO 9001:2015

We recognise our responsibility and dependence towards a healthy environment and, therefore, we destinate more than 7% of our annual budget in innovating and developing new products for the lab operator

our **7%** engagement

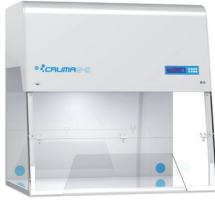
**CRUMA**  
PLUG&PLAY RANGE



G-1



G-2



G-3



G-4



G-5

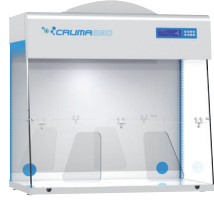
**CRUMA**  
CLASSIC RANGE



670



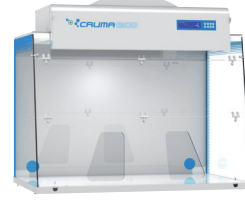
870



990



1010



1200



ECO

**CRUMA**  
VENTED STORAGE  
CUPBOARDS



2010

**CRUMA**  
DUCTED FUME HOOD  
FOR ACIDS



H+

**CRUMA**  
POWDER CABINETS



P-1



P-2

**CRUMA**  
PRECISION WEIGHING  
CABINET



W-2

**CRUMA**  
PCR CABINET



PCR

**CRUMA**  
LAMINAR FLOW CABINETS



670FL



870FL



FL1



FL2



HZ-1

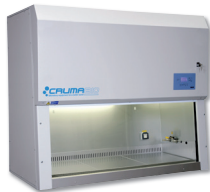


HZ-2

**CRUMA**  
BIOSAFETY CABINETS



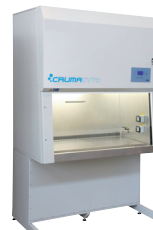
BIO-1



BIO-2



VIRUSFREE



CYTO-2&3

**CRUMA**  
CO<sub>2</sub> INCUBATOR



INCUBATOR

DISTRIBUTED BY: